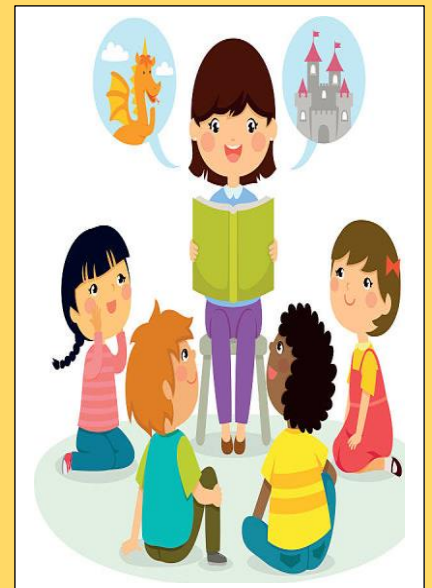


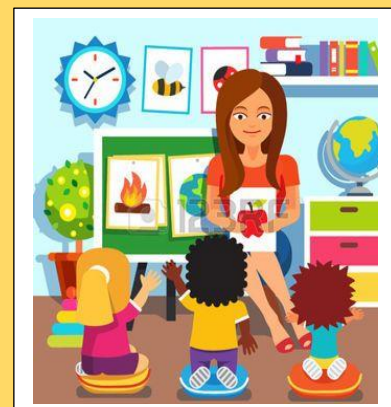
S.D. PUBLIC SCHOOL, BU – BLOCK PITAMPURA DELHI-110034

Schedule of Fees and Funds for the Year 2020-21

| S.No. | Particulars | (Rs.) |
|-------|-------------------------------|-------|
| 1 | Registration Fees | 25 |
| 2 | Admission Fees | 200 |
| 3 | Caution Money (Refundable) | 500 |
| 4 | Tution Fees (Per month) | |
| | LKG to V | 3548 |
| | VI to VIII | 3640 |
| | IX to X | 3709 |
| | XI to XII | 3922 |
| 5 | Science Fees | |
| | XI to XII (Per Subject) | 200 |
| 6 | Computer Fees | |
| | XI To XII | 315 |
| 7 | Development Fees | |
| | LKG to V | 455 |
| | VI to VIII | 465 |
| | IX to X | 480 |
| | XI to XII | 505 |
| 8 | Re-Admission Fee | 200 |
| 9 | CAL Fees (Nursary to XII) | 155 |
| 10 | Annual Charges | 5020 |



| | | |
|----|-----------------------------|------|
| 11 | Other Levies | 60 |
| 12 | Insurance cum activity fees | |
| | LKG & UKG | 100 |
| | I to III | 2200 |
| | IV & V | 1700 |
| | VI to VIII | 1900 |
| | IX to X | 1900 |
| | XI to XII | 400 |



Note: The fee structure is subject to change as per the guidelines of DOE.

Feel free to contact us at:

T: 42331837, 27346738, 27344932

Email: sdpitampura1@gmail.com

Website: www.sdpublicschoolpp.in

